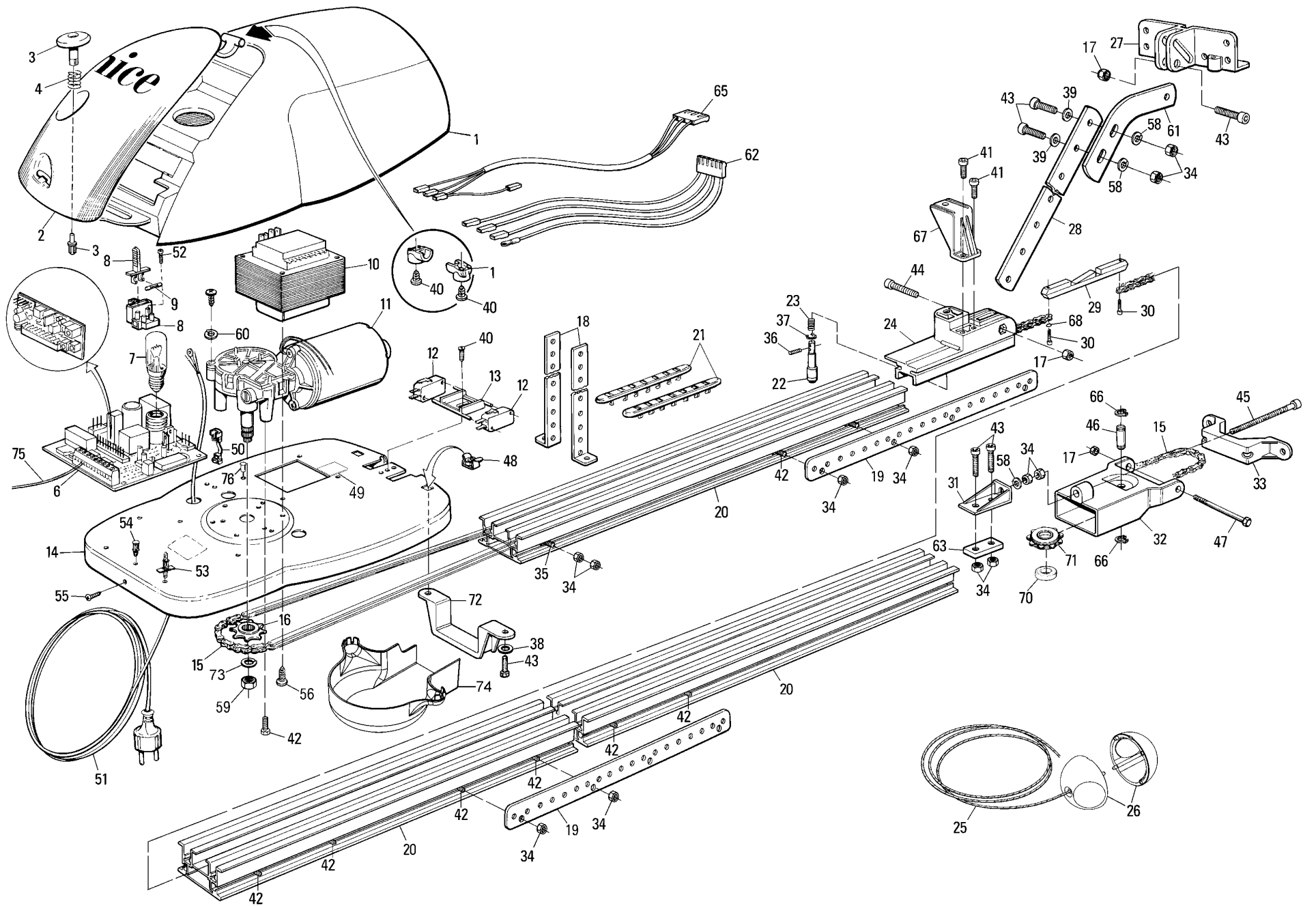


**SP6065**



Code SP6065

Description Electr.motor irr.2 speed-65 kg

Position	Code	Spare part description
1	PPD0124.4540	Lid
2	PPD0125R02.45401	Glass lid
3	PPD0126.4540	Pushbutton
4	MO-O.2640	Spring
6	SPA20	Control Unit
7	L7.6811	Lamp
8	PFM-A.2213	Fuse holder
9	F1AR.2201	Fuse
10	TRA-T.1025	Transformer
11	SPA03	Motor
12	MICROI-F.1617	Microswitch
13	PPD0171.4540	Microswitch mounting
14	PMD0122.4610	Plate
15	PMCC2T.4630	Chain
16	PMD0153B.4610	Cog wheel
17	D6.5110	Nut
18	PMD0152B.4610	Flask
19	PMD0304.4610	Junction flat
20	BPA0331B.4565	Section
21	PPD0117.4540	Slide
22	PMD0153A.4610	Unlocking pin
23	MO-I.2640	Spring
24	PPD0116.4540	Truck
25	PMCCN3.4630	Corda poliprop.grigio d.=3,5 l=1000
26	PPD1087.4540	Collar
27	PMD0554.4610	Flask
28	PMD0151.4610	Straight Pull Rod
29	PMD0153D.4610	Unclamping shuttle
30	V5X14.5102	Screw
31	BMESC.4567	Flask
33	BMESA.4567	Flask
34	D6.5102	Nut
35	V6X16.5102	Screw
36	G5X6.5123	Grub screw
37	PMCSE7.4630	Seeger ring
38	R08.5120	Washer
39	R06.5120	Washer
40	V4.2X9.5101	Screw
41	V4.8X13.5101	Screw
42	V6X10.5102	Screw
43	V6X18.5102	Screw
44	V6X30.5102	Screw
45	V6X50.5102	Screw
46	PMD0305.4610	Pin
47	V6X90.5102	Screw
48	D6-G.5110	Nut
49	INB-B.4810	Self sticking
50	MPSC.2601	Cable clamp
51	CA5.5320	Cable
52	V2.9X16.5101	Screw
53	MP004.2601	Supporto c.s. c/blocco l=9.5 "richco lcbs-6"
54	MP005.2601	Distance piece
55	V4.8X9.5-A.5101	Screw
56	V4.8X16.5101	Screw
58	R06B.5120	Washer
59	D8.5102	Nut
60	R05B.5120	Washer
61	PMD0151A.4610	Bend Pull Rod
62	CA7.5320	Wiring
63	BMESD.4567	Locking plate
65	CFSP.5320	Wiring
66	PMCSE8.4630	Seeger ring
67	PPD0150D.4540	Unlocking mounting rope
68	GOR-Q.5501	Packing
69	PMCM.8003	Cable set
70	PMCU12E.4630	Bearing
71	PPD1060.4540	Cog wheel
72	BMESB.4567	Flask
73	R08E.5120	Rondella dentellata Di8 UNI8842A Zn B
74	PPD1061.4540	Lid
75	AF.5301	Wiring
76	MP006.2601	Cap